



Park Need Calculation Clarification and Subarea Need

At the September Steering Committee meeting, incorrect information was provided in response to a question about the difference between Study Area need and “subarea” need. It was incorrectly stated that population density was not considered when determining park need in subareas, and that population density was only considered in determining need in Study Areas.

In fact, population density was one of three metrics used to determine park need in subareas:



Subarea need varies within each Study Area

Study Area need was calculated primarily based on the percent of population in High and Very High need subareas within each Study Area, using the calculations for each subarea described above¹. Therefore, the three factors illustrated above were the primary factors used to identify need in both subareas and Study Areas for the 2016 Countywide Comprehensive Parks Needs Assessment (PNA).

Subarea Need

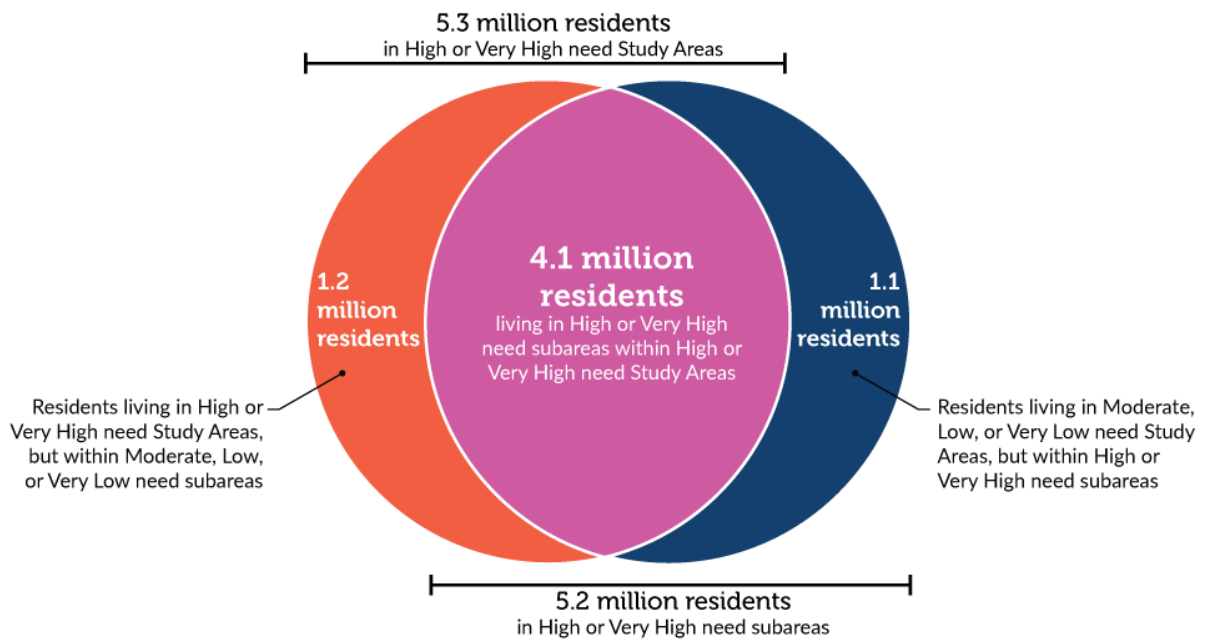
Analyzing Los Angeles County’s population by Study Area need shows that 52.6% of the County population, or approximately 5.3 million people, lives in a High or Very High need Study Area.

Analyzing the County population by subarea need level shows that a similar percentage, 51% of the County population, or approximately 5.2 million people, lives in a High or Very High need subarea.

Of residents living in a High or Very High need subarea, nearly 80%, or approximately 4.1 million residents, also live within a High or Very High need Study Area and will thus benefit from Category 2 funds. However, over 20% of

¹ Park amenity condition, lack of a park within a Study Area, and total Study Area population were further used to move Study Areas up or down one or more levels of need, but only after the percent of population in High and Very High need subareas was calculated. Twenty two Study Areas had their need level adjusted using these criteria. Of these, three Study Areas were moved from Moderate need to High need; and three were moved from High need to Very High need. No Study Areas were moved out of the High or Very High need level.

residents living in a High or Very High need subarea live in Moderate, Low, or Very Low need Study Areas. This equates to approximately 1.1 million people living in subareas of High or Very High need within Moderate, Low, or Very Low need Study Areas.



There are a total of 89 Study Areas (44 Moderate need, 32 Low need, and 13 Very Low need Study Areas) with High or Very High need subareas. The number of residents in these High or Very High need subareas in each Study Area ranges from 15 to just over 49,000 (refer to Table 1).

The consideration of High and Very High need subareas could be relevant to Los Angeles County Regional Park and Open Space District's (RPOSD's) proposed targeting of funds and to the evaluation of Level of Need for competitive grants.

Targeted Funds

RPOSD recommends that targeted funds from General Category 3 and General Category 4 competitive grants be targeted only to those Study Areas that are High or Very High need. These targeted funds are intended to ensure that agencies with the greatest need for parks are able to secure funds and thus should be focused on Study Area need.

Evaluation of Level of Need for Competitive Grants

RPOSD recommends that subarea need be considered when evaluating Level of Need in competitive grant applications, in the following manner:

1. Subarea need should only be considered if the project is located within a High or Very High need subarea and the project's Study Area contains at least 5,000 residents living in High or Very High need subareas. Using data from the 2016 PNA, this includes 40 Moderate need and 14 Low need Study Areas. No Very Low need Study Areas have 5,000 residents living in High or Very High need subareas. These 54 Study Areas include 95.8% of the 1.1 million residents who live in High or Very High need subareas within Moderate,

Low, or Very Low need Study Areas. The remaining 4.2% of residents live in Moderate, Low, or Very Low need Study Areas that do not have a substantial number of residents (less than 5,000 residents) living in High or Very High need subareas.

2. Projects located in or serving High or Very High need subareas within qualifying Study Areas that are not High or Very High need should receive fewer points than projects located in High or Very High need Study Areas. As an example, for General Category 3 Grants the following scoring is suggested:

<p>Level of Need</p> <p>Level of need is based on the current Countywide Parks Needs Assessment determination. Projects located within or serving Study Areas or subareas with High or Very High need will receive more points than projects that do not.</p> <p>Only one of the following four subcriteria will apply to each project.</p>	<p>25 points maximum</p>
<p><i>(A) Project is located in a High or Very High need Study Area.</i></p>	<p>25</p>
<p><i>(B) Project is not located in a High or Very High need Study Area, but directly serves the residents of a High or Very High need Study Area.</i></p> <p><i>This subcriterion will be scored on a range of 6 to 15 points depending on how the project serves residents of the High or Very High need Study Area.</i></p>	<p>6-15</p>
<p><i>(C) Project does not meet subcriterion (A) or (B), but is located within a High or Very High need subarea within a Study Area that contains at least 5,000 residents living in High or Very High need subareas.</i></p>	<p>10</p>
<p><i>Project does not meet subcriterion (A), (B), or (C), but directly serves a High or Very High need subarea within a Study Area that contains at least 5,000 residents living in High or Very High need subareas.</i></p> <p><i>This subcriterion will be scored on a range of 1 to 4 points depending on how the project serves residents of the High or Very High need subarea.</i></p>	<p>1-4</p>

Table 1 - High and Very High Need Subarea Population within Moderate, Low, and Very Low Need Study Areas

Study Area ID	Study Area Name	Study Area Need Level	Study Area Population in High and Very High Need Subareas
183	City of LA Northeast Los Angeles - North	Moderate	49,718
182	City of Santa Monica	Moderate	45,685
179	Santa Clarita - North	Moderate	37,057
122	City of Lancaster - Westside	Moderate	36,993
121	City of LA Wilmington - Harbor City / City of LA Port of LA	Moderate	32,111
151	Santa Clarita - South	Moderate	31,543
177	City of LA Northeast Los Angeles - South	Moderate	31,100
103	City of LA Hollywood - North	Moderate	30,994
73	City of LA Granada Hills - Knollwood	Moderate	28,809
186	City of Redondo Beach	Moderate	28,488
131	City of Montebello	Moderate	28,373
134	Unincorporated South Whittier/ Uninc. East La Mirada	Moderate	28,081
160	City of West Covina	Moderate	27,022
173	City of Pasadena - Westside	Moderate	26,324
138	City of LA Silver Lake - Echo Park - Elysian Valley	Moderate	26,021
69	City of Lancaster - Eastside	Moderate	24,382
136	City of LA Encino - Tarzana	Moderate	24,315
180	City of Glendale - Northside	Low	24,027
155	City of Pomona - Northside	Moderate	23,083
98	City of Rosemead	Moderate	21,911
148	City of Monterey Park	Moderate	21,867
185	City of LA San Pedro / City of LA Port of Los Angeles / Unincorporated La Rambla	Moderate	21,798
146	City of LA West Hills - Woodland Hills \ Uninc. Canoga Park - West Hills	Moderate	21,206
96	City of LA Sylmar	Moderate	20,556
152	City of LA Chatsworth - Porter Ranch / Uninc. Chatsworth / Uninc. Northridge / Uninc. Canoga Park / Uninc. Porter Ranch-Oat Mountain	Low	19,153
129	City of LA Brentwood - Pacific Palisades	Moderate	17,896
150	City of Pomona - Southside	Moderate	17,796
92	Unincorporated Rowland Heights	Moderate	17,426
167	City of Beverly Hills	Moderate	16,634
124	City of Palmdale - Eastside / Uninc. South Antelope Valley	Low	16,205
84	City of LA Sherman Oaks - Studio City - Toluca Lake - Cahuenga Pass / Uninc. Universal City	Low	15,505

Study Area ID	Study Area Name	Study Area Need Level	Study Area Population in High/Very High Need Subareas
93	City of Covina	Moderate	14,044
110	City of Pico Rivera	Low	13,952
132	City of Pasadena - Eastside / Unincorporated Kinneloa Mesa	Moderate	13,707
176	City of Burbank	Low	12,832
111	City of San Gabriel	Moderate	12,539
166	City of Arcadia	Low	11,912
175	City of Azusa	Moderate	11,449
172	City of Culver City	Moderate	10,379
20	Unincorporated San Jose Hills	Moderate	9,600
39	Unincorporated Valinda	Moderate	9,286
91	Unincorporated Castaic	Moderate	9,144
181	City of Torrance - South	Low	8,137
127	Unincorporated Azusa	Moderate	7,942
157	City of Diamond Bar	Low	7,452
153	City of Lakewood / Unincorporated Lakewood	Low	7,202
139	City of LA Sunland - Tujunga - Lake View Ter. - Shadow Hills	Low	7,140
97	City of Long Beach Central	Low	6,791
128	City of Hermosa Beach	Moderate	6,386
62	City of Lomita	Moderate	6,249
77	City of Monrovia	Low	5,878
41	City of Hawaiian Gardens	Moderate	5,728
165	City of Long Beach East / Unincorporated Long Beach	Low	5,446
55	City of Commerce	Moderate	5,081
187	City of Whittier	Low	4,785
137	City of La Mirada	Moderate	3,866
125	City of Palmdale - Westside	Low	3,694
47	Unincorporated Altadena	Low	3,632
89	City of South Pasadena	Low	3,626
178	City of Manhattan Beach	Low	3,552
78	City of South El Monte/ Unincorporated El Monte/ Uninc. Whittier Narrows	Low	3,083
65	Unincorporated West Whittier - Los Nietos	Low	2,639
99	Unincorporated Hacienda Heights-Whittier	Low	2,251
19	Unincorporated Quartz Hill-Lancaster	Moderate	2,032
144	City of Glendora / Unincorporated Glendora	Low	1,704
63	Unincorporated Marina del Rey	Moderate	1,700
126	City of Santa Fe Springs	Low	1,274

Study Area ID	Study Area Name	Study Area Need Level	Study Area Population in High/Very High Need Subareas
171	City of Claremont / Unincorporated Claremont	Low	1,026
5	Unincorporated Covina Islands	Moderate	1,007
184	City of Cerritos \ Unincorporated Cerritos	Low	600
158	City of El Segundo	Low	599
52	Unincorporated Sunrise Village-South San Gabriel-Whittier Narrows	Low	574
29	Unincorporated Angeles National Forest	Low	531
143	City of Duarte	Low	412
33	Unincorporated Monrovia	Low	365
156	City of San Dimas / Unincorporated San Dimas	Very Low	296
25	City of Industry	Very Low	186
66	City of La Canada Flintridge	Very Low	156
170	City of Rancho Palos Verdes	Very Low	106
9	Unincorporated Acton/ Uninc. South Antelope Valley	Very Low	102
3	City of Vernon / Unincorporated Vernon	Very Low	101
49	Unincorporated Stevenson/Newhall Ranch	Very Low	70
141	City of Signal Hill	Very Low	55
8	City of San Marino	Very Low	38
159	City of La Verne / Uninc. La Verne/ Uninc. Claremont	Very Low	32
48	Unincorporated Ladera Heights / View Park - Windsor Hills	Very Low	28
86	City of Rolling Hills Estates / Unincorporated Westfield	Very Low	20
17	Unincorporated Northeast Antelope Valley	Very Low	16
10	Unincorporated Agua Dulce-Angeles National Forest-Canyon Country	Low	15