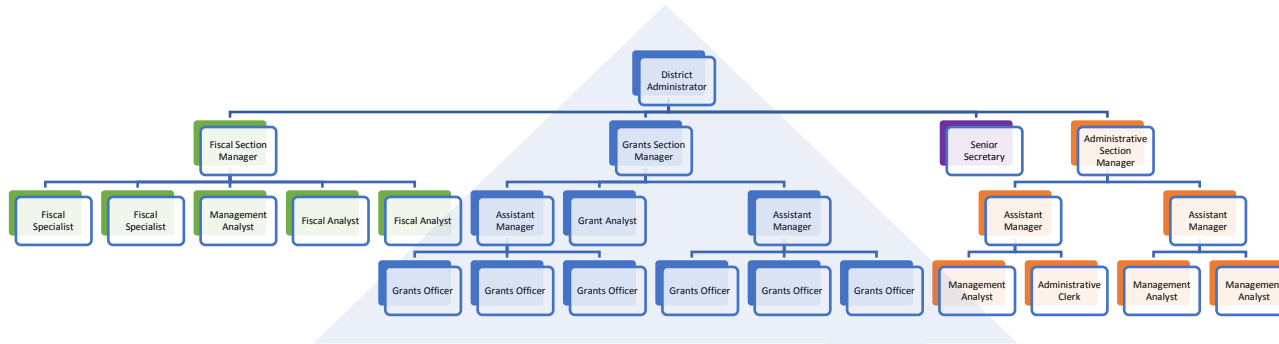




# LOS ANGELES COUNTY REGIONAL PARK AND OPEN SPACE DISTRICT



1. For demonstrative purpose, we shall use RPOSD's organizational chart. On the left is the version that lists all the staff positions in the *entire* agency, which is NOT requested by this application. Note that the positions indicated in blue are the staff whose roles are dedicated towards grant administration.

2. This application requests a document reflecting the operating structure, including the number of staff and staff roles, *dedicated towards grant or project administration in your agency*. If RPOSD was the one submitting this grant application, the uploaded document would only feature the streamlined organizational chart on the right.

