

**MAINTENANCE & SERVICING**

Formula-based allocations for maintenance and servicing of grant-funded projects.

**PROGRAM INNOVATION & OVERSIGHT**

Needs Assessment updates, innovative technologies, and operations of RPOSD.

**CATEGORY 5**

**Youth and Veteran Job Training and Placement Opportunities Program**  
Grants, to be awarded through a competitive process

**CATEGORY 1**

**Community-Based Park Investment Program**  
Formula-based allocations of funds for grants to each Study Area.

**CATEGORY 4**

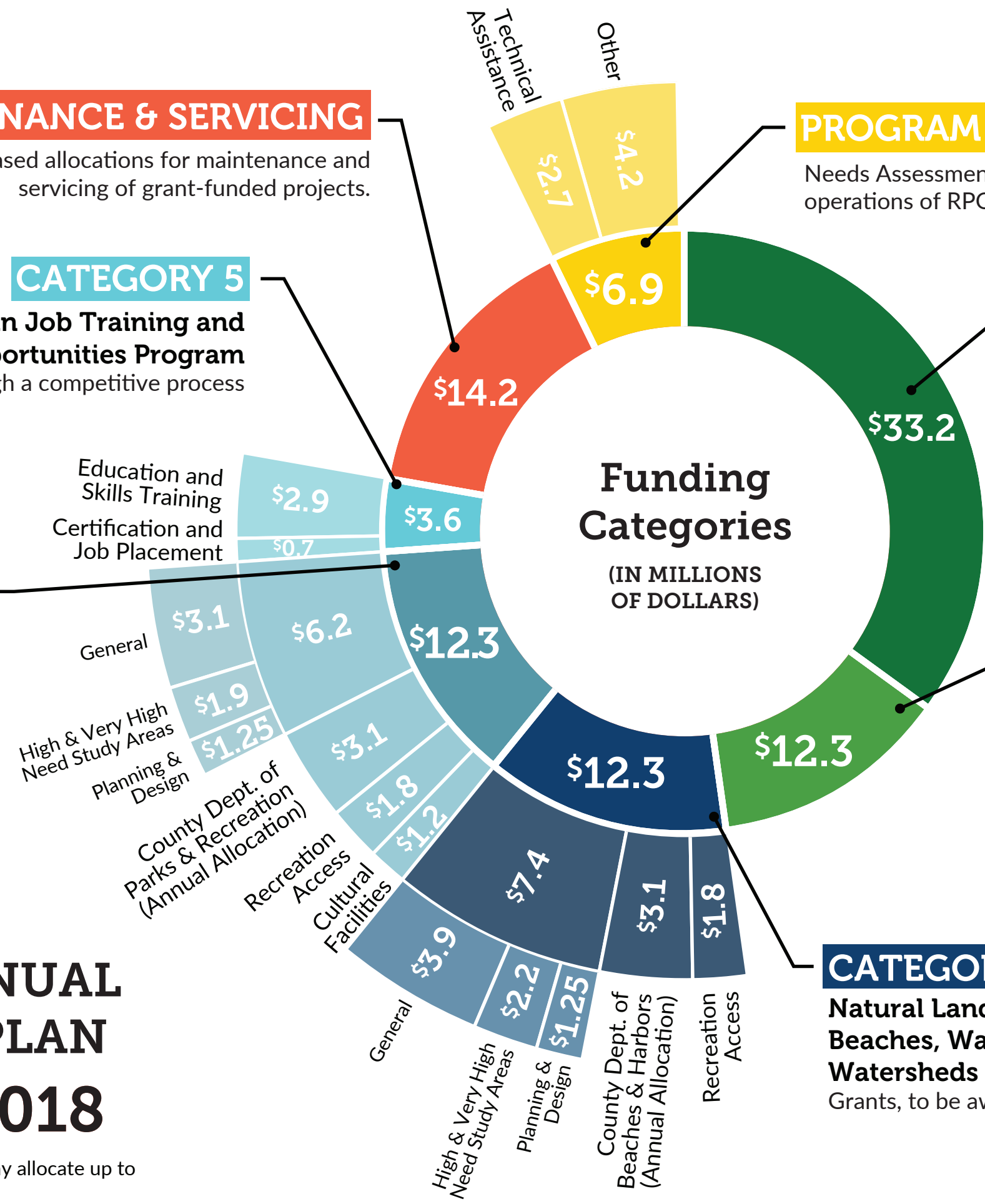
**Regional Recreational Facilities, Multi-use Trails and Accessibility Program**  
Grants, to be awarded through a competitive process.

**CATEGORY 2**

**Safe, Clean Neighborhood Parks, Healthy Communities, and Urban Greening Program**  
Formula-based allocations of funds for grants to High and Very-High Need Study Areas.

**CATEGORY 3**

**Natural Lands, Open Spaces and Local Beaches, Water Conservation, and Watersheds Protection Program**  
Grants, to be awarded through a competitive process.



**MEASURE A ANNUAL EXPENDITURE PLAN**  
**\$96.8M for 2018**

Note: The District's Board of Supervisors may allocate up to 2% of total funds for eligible projects.