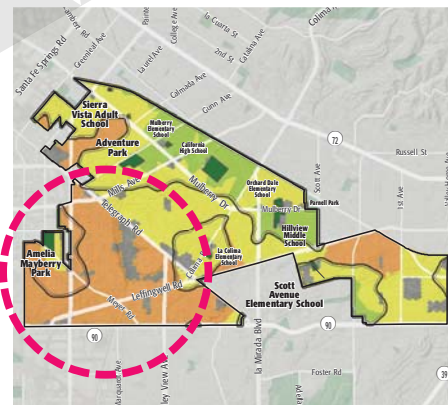
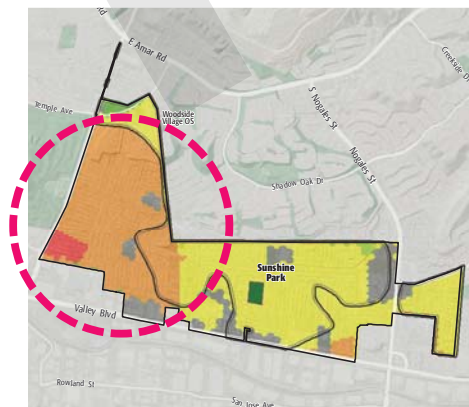
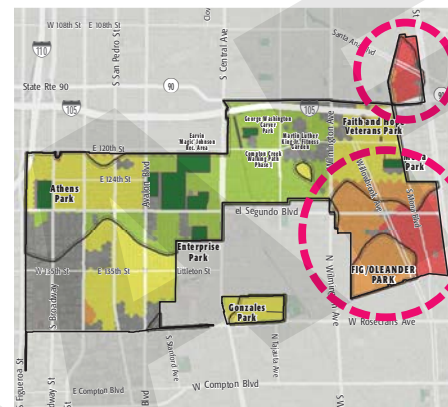


Using Allocations to Meet Need in Your Study Area

Identifying Projects in Higher Need Areas

- A detailed map of **park need** was developed for each Study Area, evaluated as part of the Park Needs Assessment. This map should be consulted when identifying projects to be completed with annual allocation funds.
- Effort should be made to select projects in the **relatively higher need areas** within Study Areas. RPOSD will continue to map park need in each Study Area over time, providing an opportunity to monitor and evaluate how Measure A funds are helping to meet the identified need throughout the county.

Example Study Areas



LEGEND

PARK NEED CATEGORY

- Very High
- High
- Moderate
- Low
- Very Low
- No Population
- Area within 1/2 mile walk of a park

○ Example areas of relatively higher need

